

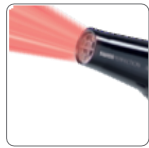
SOLIS Swiss Perfection 360° ionicPRO

Type 440

Solis' most popular and powerful professional hair dryer with 50% more air pressure, 40% greater airflow and ionicPRO Technology that dries even the fullest and thickest hair quickly and in a healthy way.



Solis



Perfect for full & thick hair

Provides 50% more air pressure and a 40% greater air flow than comparable professional hair dryers.



Quick drying & healthy hair

Solis ionicPRO Technology provides 8x more ions, allowing for even quicker blow-drying as well as healthier and shinier hair.



Ultimate performance

Most powerful professional hair dryer with a professional AC motor with 2'300 watts for optimal durability and performance.



Freedom of movement

The Solis 360°-Cord prevents the cable from tangling and damaging and allows for easier styling all around the head.



Cold shot function

The cold shot function helps to seal the hair cuticle, setting the final look for long-lasting hold, and adds shine.



Styling nozzle included

Concentrates the air flow to allow for easier styling of wavy or curly hair.

Specifications

Article no.:	968.22 968.23 968.24
Colour:	black silver white
Output:	2'300 W
Weight:	510 g (excl. cord)
Dimensions:	22 x 9 x 21 cm (w x d x h)
EAN:	7611210968221 7611210968238 7611210968245

Features

- + Ergonomic handle prevents premature fatigue
- + Multiple speed and heat settings
- + Detachable hair filter for easy cleaning
- + Overheat protection to prevent motor from permanent damage
- + Cable length: 3 m



So smart, so Solis.